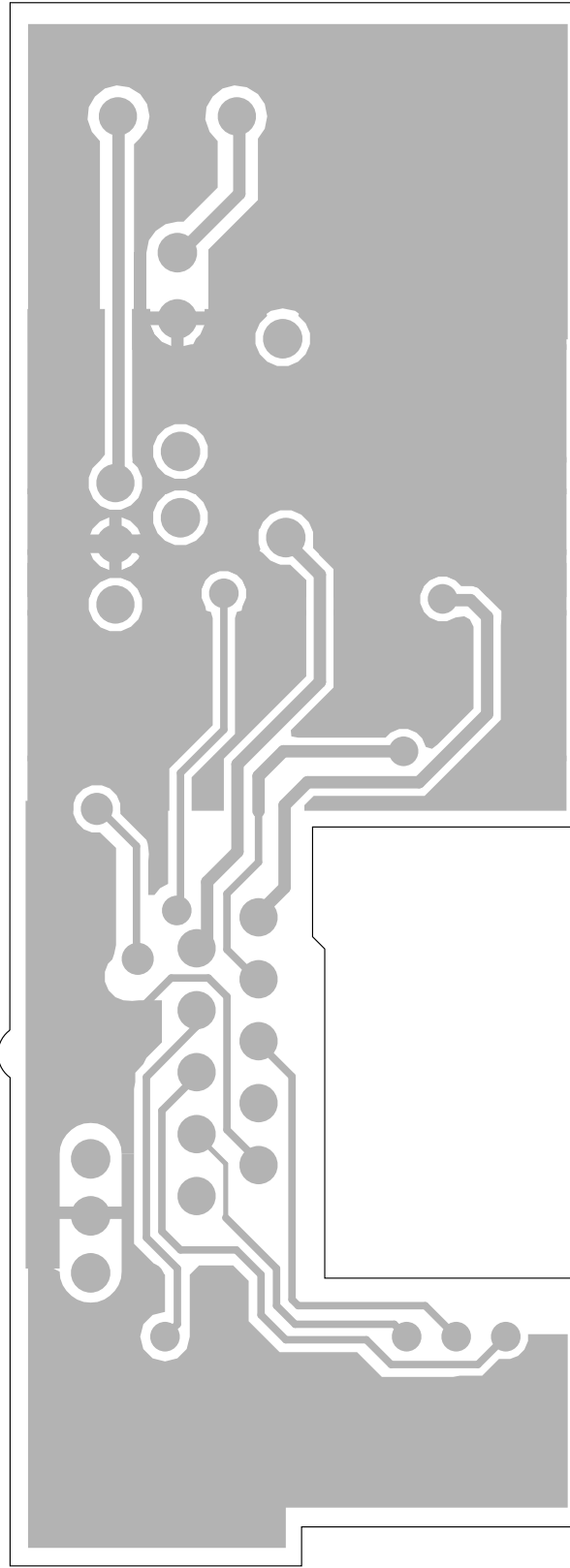


7.8 T2000 IF PCB

T2000 IF Parts List (IPN 220-01384-00)

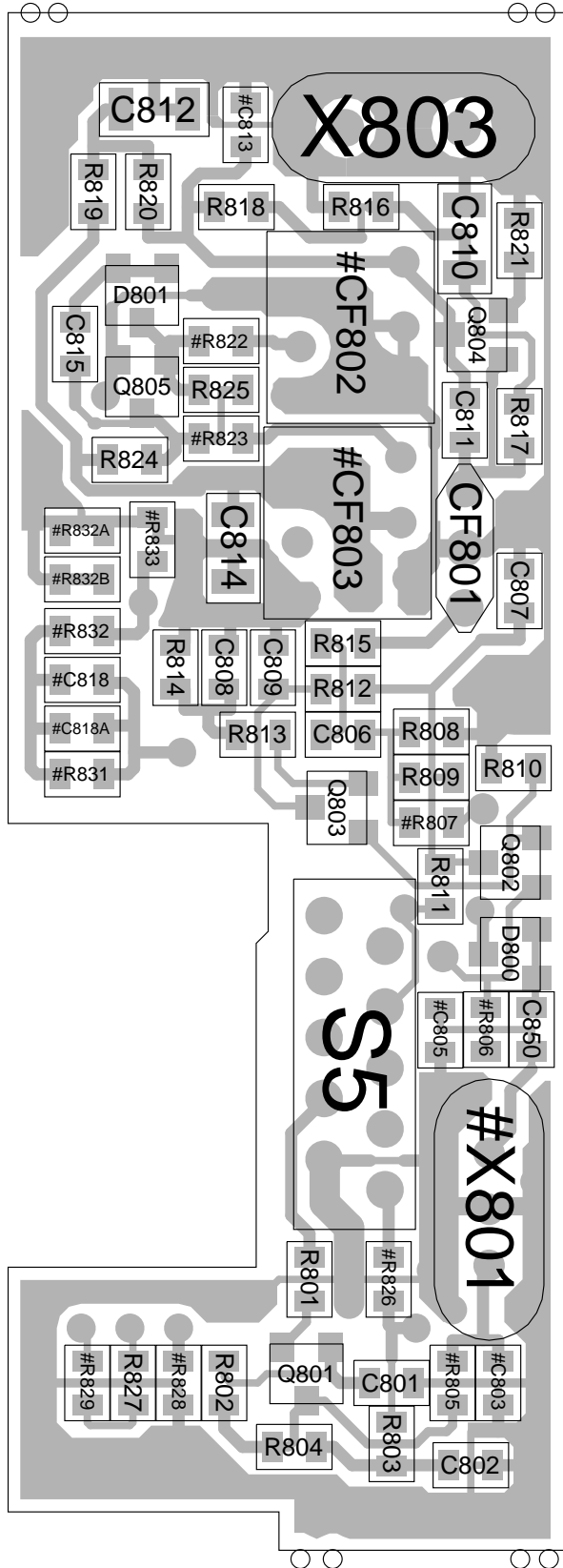
| Ref | Var | IPN | Description | Ref | Var | IPN | Description |
|--------|-----|--------------|--|-----------|-----|-----------------------------------|--|
| C801 | | 015-24470-08 | CAP CER 0805 CHIP 4N7 10% X7R 50V | #R826 | X3X | 036-15470-00 | RES M/F 0805 CHIP 47K 5% |
| CF801 | | 276-00010-17 | FLTR CER 10.7MHZ+-50KHZ B/W SFE10.7MS2 | R827 | | 036-17100-00 | RES M/F 0805 CHIP 1M 5% |
| C802 | | 015-25100-08 | CAP CER 0805 CHIP 10N 10% X7R 50V | #R828 | X1X | 036-13560-00 | RES M/F 0805 CHIP 560E 5% |
| #CF802 | X1X | 276-00010-18 | FLTR CER 455KHZ+-10KHZ B/W CFU455D2 | #R828 | X2X | 036-14470-00 | RES M/F 0805 CHIP 4K7 5% |
| #CF802 | X2X | 276-00010-30 | FLTR CER 455KHZ+-4.5KHZ B/W CFU455G2 | #R828 | X3X | 036-14100-00 | RES M/F 0805 CHIP 1K 5% |
| #CF802 | X3X | 276-00010-64 | FLTR CER 455KHZ 15KHZ B/W CFU455E2 | #R829 | X1X | 036-16220-00 | RES M/F 0805 CHIP 220K 5% |
| #C803 | X1X | 015-20050-01 | CAP CER 0805 CHIP 0P5 +/-0.5P NPO 50V | #R829 | X2X | 036-12100-00 | RES M/F 0805 CHIP 10E 5% |
| #CF803 | X1X | 276-00010-18 | FLTR CER 455KHZ+-10KHZ B/W CFU455D2 | #R829 | X3X | 036-16220-00 | RES M/F 0805 CHIP 220K 5% |
| #C803 | X2X | 015-21390-01 | CAP CER 0805 CHIP 3P9 +/-0.25P NPO 50V | #R831 | X1X | 036-15470-00 | RES M/F 0805 CHIP 47K 5% |
| #CF803 | X2X | 276-00010-30 | FLTR CER 455KHZ+-4.5KHZ B/W CFU455G2 | #R831 | X2X | 036-15100-00 | RES M/F 0805 CHIP 10K 5% |
| #C803 | X3X | 015-20050-01 | CAP CER 0805 CHIP 0P5 +/-0.5P NPO 50V | #R831 | X3X | 036-15470-00 | RES M/F 0805 CHIP 47K 5% |
| #CF803 | X3X | 276-00010-64 | FLTR CER 455KHZ 15KHZ B/W CFU455E2 | #R832 | X1X | 036-12100-00 | RES M/F 0805 CHIP 10E 5% |
| #C805 | X1X | 015-20050-01 | CAP CER 0805 CHIP 0P5 +/-0.5P NPO 50V | #R832 | X2X | 036-12100-00 | RES M/F 0805 CHIP 10E 5% |
| #C805 | X2X | 015-21390-01 | CAP CER 0805 CHIP 3P9 +/-0.25P NPO 50V | #R832 | X3X | 036-12100-00 | RES M/F 0805 CHIP 10E 5% |
| #C805 | X3X | 015-20050-01 | CAP CER 0805 CHIP 0P5 +/-0.5P NPO 50V | #R832A | X1X | 036-10000-00 | RES M/F 0805 CHIP ZERO OHM |
| C806 | | 015-23470-08 | CAP CER 0805 CHIP 470P 10% X7R 50V | #R832B | X3X | 036-10000-00 | RES M/F 0805 CHIP ZERO OHM |
| C807 | | 015-25100-08 | CAP CER 0805 CHIP 10N 10% X7R 50V | #R833 | X1X | 036-15270-00 | RES M/F 0805 CHIP 27K 5% |
| C808 | | 015-25100-08 | CAP CER 0805 CHIP 10N 10% X7R 50V | #R833 | X2X | 036-14820-00 | RES M/F 0805 CHIP 8K2 5% |
| C809 | | 015-21560-01 | CAP CER 0805 CHIP 5P6 +/-0.25P NPO 50V | #R833 | X3X | 036-15390-00 | RES M/F 0805 CHIP 39K 5% |
| C810 | | 015-05220-08 | CAP CER 1206 CHIP 22N 10% X7R 50V | | | | |
| C811 | | 015-21680-01 | CAP CER 0805 CHIP 6P8 +/-0.25P NPO 50V | S5 | | 240-02010-76 | SKT 10WAY MICROMATCH SIDE ENTRY PCB 1-21 |
| C812 | | 015-05220-08 | CAP CER 1206 CHIP 22N 10% X7R 50V | | | | |
| #C813 | X2X | 015-22180-01 | CAP CER 0805 CHIP 18P 5% NPO 50V | #X801 | X1X | 276-00010-20 | FLTR XTAL 10.7MHZ 15KHZ B/W 2 POLE 10 F15A |
| C814 | | 015-05220-08 | CAP CER 1206 CHIP 22N 10% X7R 50V | #X801 | X2X | 276-00010-19 | FLTR XTAL 10.7MHZ 7.5KHZ B/W 2 POLE QMF 10M |
| C815 | | 015-24100-08 | CAP CER 0805 CHIP 1N 10% X7R 50V | #X801 | X3X | 276-00010-35 | FLTR XTAL 10.7MHZ 12KHZ B/W 2 POLE 10F 12A |
| #C818 | X2X | 015-24220-08 | CAP CER 0805 CHIP 2N2 10% X7R 50V | X803 | | 274-00010-40 | XTAL 10.245MHZ TE-40 AT-51 +-50 PPM C/W TEFL |
| #C818A | X2X | 015-24470-08 | CAP CER 0805 CHIP 4N7 10% X7R 50V | | | | |
| C850 | | 015-25100-08 | CAP CER 0805 CHIP 10N 10% X7R 50V | | | 220-01384-00 | PCB T2000 SII IF BOARD |
| D800 | | 001-10000-17 | (S) DIODE SMD DUAL BAT-17 SCHOTTKY SML SI | Variants: | X1X | wide band (15kHz IF bandwidth) | |
| D801 | | 001-10000-99 | (S) DIODE SMD BAV99 DUAL SWTCH SNGLE INLI | | X2X | narrow band (7.5kHz IF bandwidth) | |
| Q801 | | 000-10008-94 | (S) XSTR SMD BFS19 NPN SOT-23 RF SMALL SIG | | X3X | medium band (12kHz IF bandwidth) | |
| Q802 | | 000-10008-94 | (S) XSTR SMD BFS19 NPN SOT-23 RF SMALL SIG | | | | |
| Q803 | | 000-10008-94 | (S) XSTR SMD BFS19 NPN SOT-23 RF SMALL SIG | | | | |
| Q804 | | 000-10008-94 | (S) XSTR SMD BFS19 NPN SOT-23 RF SMALL SIG | | | | |
| Q805 | | 000-10008-94 | (S) XSTR SMD BFS19 NPN SOT-23 RF SMALL SIG | | | | |
| R801 | | 036-12390-00 | RES M/F 0805 CHIP 39E 5% | | | | |
| R802 | | 036-16100-00 | RES M/F 0805 CHIP 100K 5% | | | | |
| R803 | | 036-12560-00 | RES M/F 0805 CHIP 56E 5% | | | | |
| R804 | | 036-14100-00 | RES M/F 0805 CHIP 1K 5% | | | | |
| #R805 | X1X | 036-14220-00 | RES M/F 0805 CHIP 2K2 5% | | | | |
| #R805 | X2X | 036-14100-00 | RES M/F 0805 CHIP 1K 5% | | | | |
| #R805 | X3X | 036-14220-00 | RES M/F 0805 CHIP 2K2 5% | | | | |
| #R806 | X1X | 036-13330-00 | RES M/F 0805 CHIP 330E 5% | | | | |
| #R806 | X2X | 036-13220-00 | RES M/F 0805 CHIP 220E 5% | | | | |
| #R806 | X3X | 036-13330-00 | RES M/F 0805 CHIP 330E 5% | | | | |
| #R807 | X1X | 036-15220-00 | RES M/F 0805 CHIP 22K 5% | | | | |
| #R807 | X2X | 036-15120-00 | RES M/F 0805 CHIP 12K 5% | | | | |
| #R807 | X3X | 036-15220-00 | RES M/F 0805 CHIP 22K 5% | | | | |
| R808 | | 036-15390-00 | RES M/F 0805 CHIP 39K 5% | | | | |
| R809 | | 036-15330-00 | RES M/F 0805 CHIP 33K 5% | | | | |
| R810 | | 036-14560-00 | RES M/F 0805 CHIP 5K6 5% | | | | |
| R811 | | 036-13100-00 | RES M/F 0805 CHIP 100E 5% | | | | |
| R812 | | 036-13390-00 | RES M/F 0805 CHIP 390E 5% | | | | |
| R813 | | 036-12220-00 | RES M/F 0805 CHIP 22E 5% | | | | |
| R814 | | 036-13390-00 | RES M/F 0805 CHIP 390E 5% | | | | |
| R815 | | 036-13270-00 | RES M/F 0805 CHIP 270E 5% | | | | |
| R816 | | 036-15100-00 | RES M/F 0805 CHIP 10K 5% | | | | |
| R817 | | 036-13470-00 | RES M/F 0805 CHIP 470E 5% | | | | |
| R818 | | 036-15470-00 | RES M/F 0805 CHIP 47K 5% | | | | |
| R819 | | 036-14100-00 | RES M/F 0805 CHIP 1K 5% | | | | |
| R820 | | 036-14150-00 | RES M/F 0805 CHIP 1K5 5% | | | | |
| R821 | | 036-12220-00 | RES M/F 0805 CHIP 22E 5% | | | | |
| #R822 | X1X | 036-13680-00 | RES M/F 0805 CHIP 680E 5% | | | | |
| #R822 | X2X | 036-14120-00 | RES M/F 0805 CHIP 1K2 5% | | | | |
| #R822 | X3X | 036-13680-00 | RES M/F 0805 CHIP 680E 5% | | | | |
| #R823 | X1X | 036-13470-00 | RES M/F 0805 CHIP 470E 5% | | | | |
| #R823 | X2X | 036-14120-00 | RES M/F 0805 CHIP 1K2 5% | | | | |
| #R823 | X3X | 036-13470-00 | RES M/F 0805 CHIP 470E 5% | | | | |
| R824 | | 036-14220-00 | RES M/F 0805 CHIP 2K2 5% | | | | |
| R825 | | 036-16180-00 | RES M/F 0805 CHIP 180K 5% | | | | |
| #R826 | X1X | 036-15470-00 | RES M/F 0805 CHIP 47K 5% | | | | |
| #R826 | X2X | 036-15680-00 | RES M/F 0805 CHIP 68K 5% | | | | |



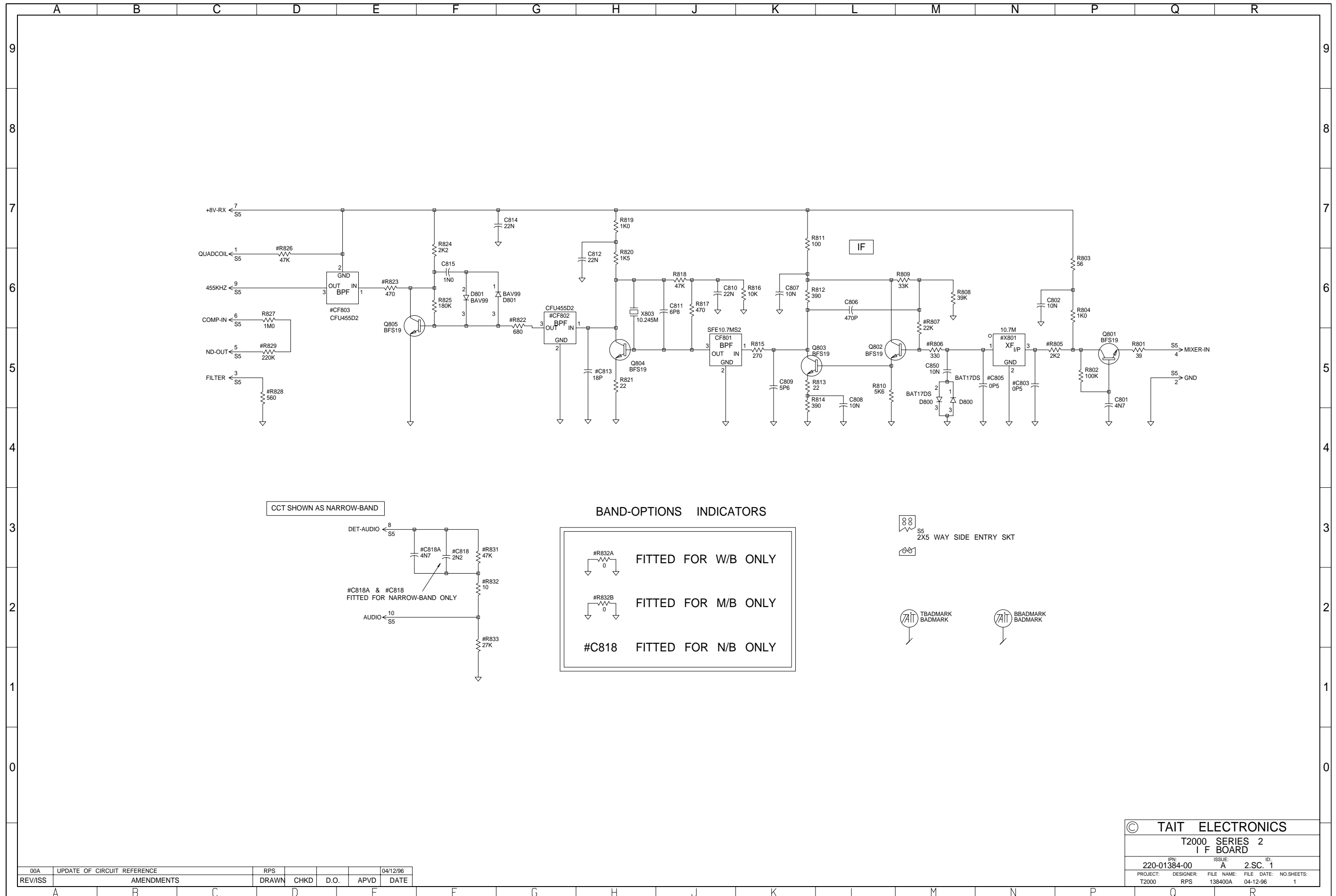
220-01384-00 ISSUE A

T2000 IF PCB (IPN 220-01384-00) - Bottom Side

220-01384-00 ISSUE A



T2000 IF PCB (IPN 220-01384-00) - Top Side



BAND-OPTIONS INDICATORS

#R832A
FITTED FOR W/B ONLY

#R832B
FITTED FOR M/B ONLY

#C818
FITTED FOR N/B ONLY

S5
2X5 WAY SIDE ENTRY SKT

TBADMARK
BADMARK

BBADMARK
BADMARK

| | | | | | | |
|---------|-----------------------------|-------|------|------|------|----------|
| 00A | UPDATE OF CIRCUIT REFERENCE | RPS | | | | 04/12/96 |
| REV/ISS | AMENDMENTS | DRAWN | CHKD | D.O. | APVD | DATE |

| | | | |
|----------------------|------------------|-----------------------|------------------------|
| © TAIT ELECTRONICS | | | |
| T2000 SERIES 2 | | | |
| I F BOARD | | | |
| IPN: 220-01384-00 | ISSUE: A | ID: 2.S.C. 1 | |
| PROJECT: T2000 | DESIGNER: RPS | FILE NAME: 138400A | FILE DATE: 04-12-96 |
| | | | NO.SHEETS: 1 |

